



AME431B-2.5V

■ General Description

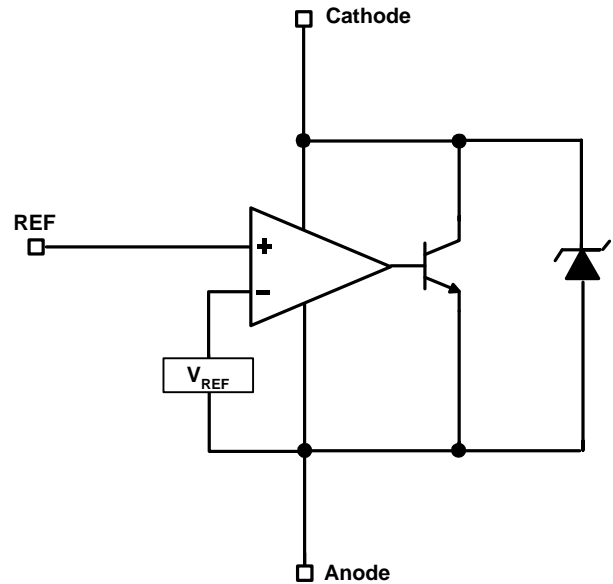
The AME431B series ICs are 3-terminal adjustable shunt regulator with guaranteed temperature stability over a full operation range. These ICs feature sharp turn-on characteristics, low temperature coefficient and low output impedance, which make them ideal substitutes for Zener diodes in applications such as switching power supply, charger and other adjustable regulators.

The reference is set to 2.5V for AME431Bxxxxx25. The output voltage can be set to 2.5V to 36V for $V_{REF}=2.5V$ part type with two external resistors.

The AME431B precision reference is offered in two reference tolerance: 0.5% and 1.0%

The 5 main packages have low thermal impedance which allows operation over a wide range of $-40^{\circ}C$ to $125^{\circ}C$.

■ Functional Block Diagram



■ Features

- High Stability under Capacitive Load
- Low Temperature Deviation: 4.5mV Typical
- Low Equivalent Full-Range Temperature Coefficient with 20PPM/ $^{\circ}C$ Typical
- Low Dynamic Output Resistance: 0.2 Ω Typical
- Sink Current Capacity from 1mA to 100mA
- Low Output Noise
- Available in 5 Packages: TO-92-3, SOT-23, SOT-89, SOP-8 and SOT-25
- All AME's Lead Free Products Meet RoHS Standards

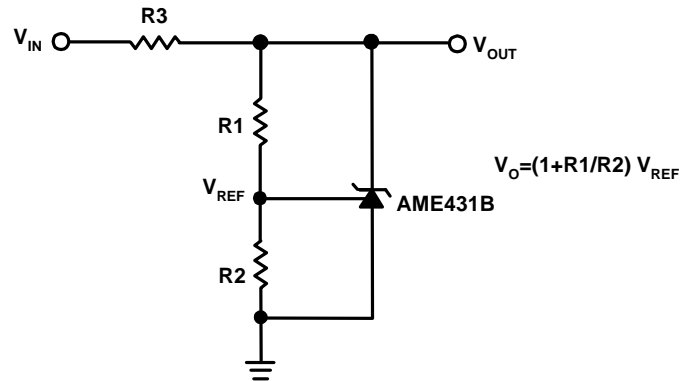
■ Applications

- Adjustable Power Supplies
- Linear Regulators
- Battery Operated Computer
- Portable Electronics
- Instrumentation
- Switching Power Supply
- Mother Board
- LCD Monitor
- Note Book Computer

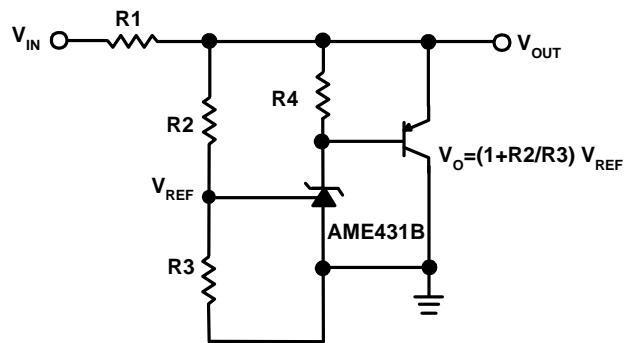
AME431B-2.5V

■ Typical Applications

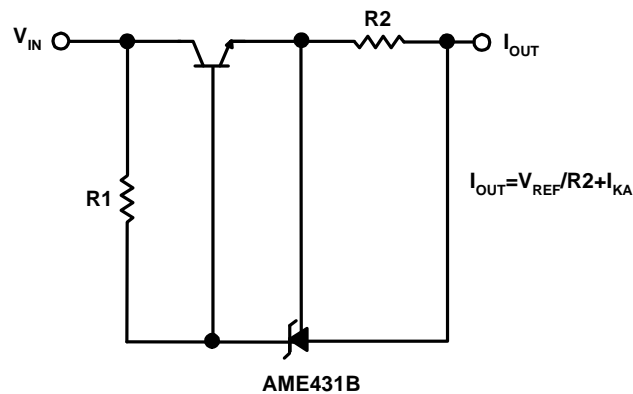
Shunt Regulator



High Current Shunt Regulator



Current Source or Current Limit

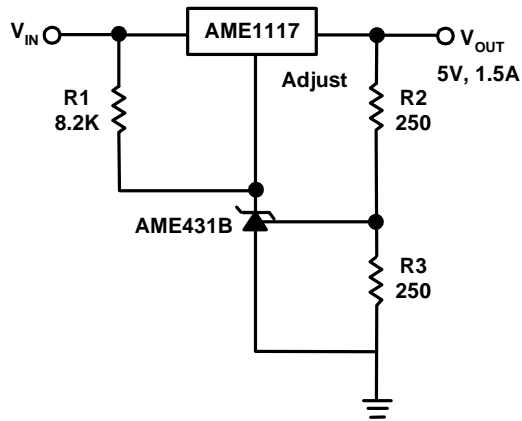




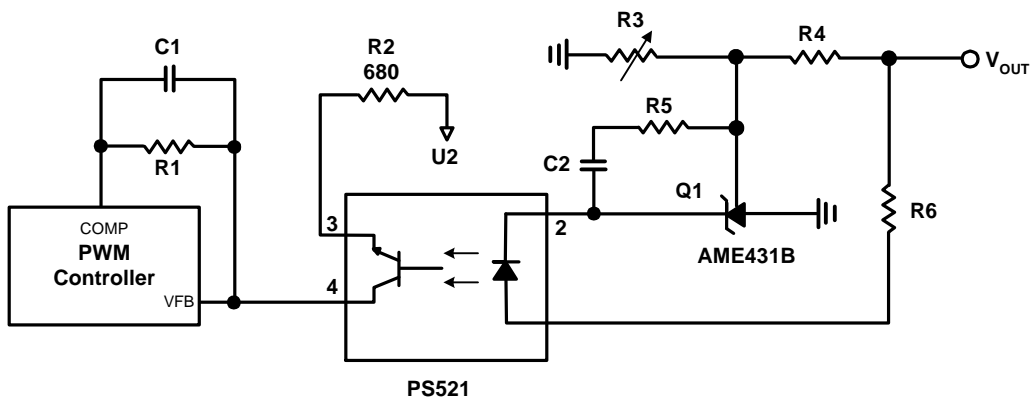
AME431B-2.5V

■ Typical Applications (contd.)

Precision 5V 1.5A Regulator



Precision 5V 1.5A Regulator

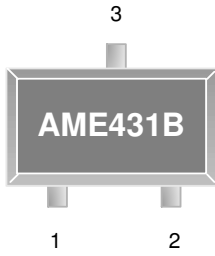




AME431B-2.5V

■ Pin Configuration

SOT-23/TSOT-23
Top View

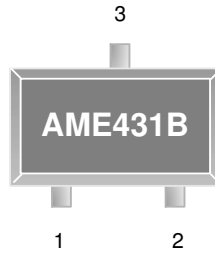


AME431BAJETXXXX

- 1. Cathode
- 2. REF
- 3. Anode

* Die Attach:
Conductive Epoxy

SOT-23/TSOT-23
Top View

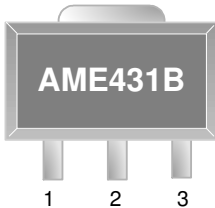


AME431BBJETXXXX

- 1. REF
- 2. Cathode
- 3. Anode

* Die Attach:
Conductive Epoxy

SOT-89
Front View

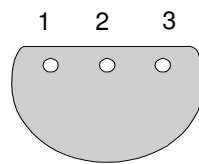


AME431BAJFTXXXX

- 1. REF
- 2. Anode
- 3. Cathode

* Die Attach:
Conductive Epoxy

TO-92-3
Bottom View

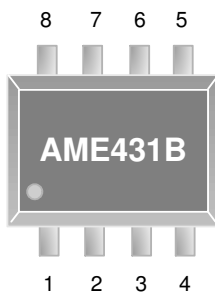


AME431BAJATXXXX

- 1. REF
- 2. Anode
- 3. Cathode

* Die Attach:
Conductive Epoxy

SOP-8
Top View

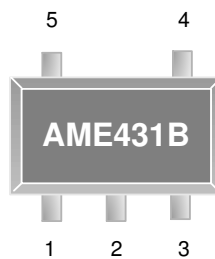


AME431BAJHAXXXX

- 1. Cathode
- 2. Anode
- 3. Anode
- 4. NC
- 5. NC
- 6. Anode
- 7. Anode
- 8. REF

* Die Attach:
Conductive Epoxy

SOT-25/TSOT-25
Top View



AME431BAJEVXXXX

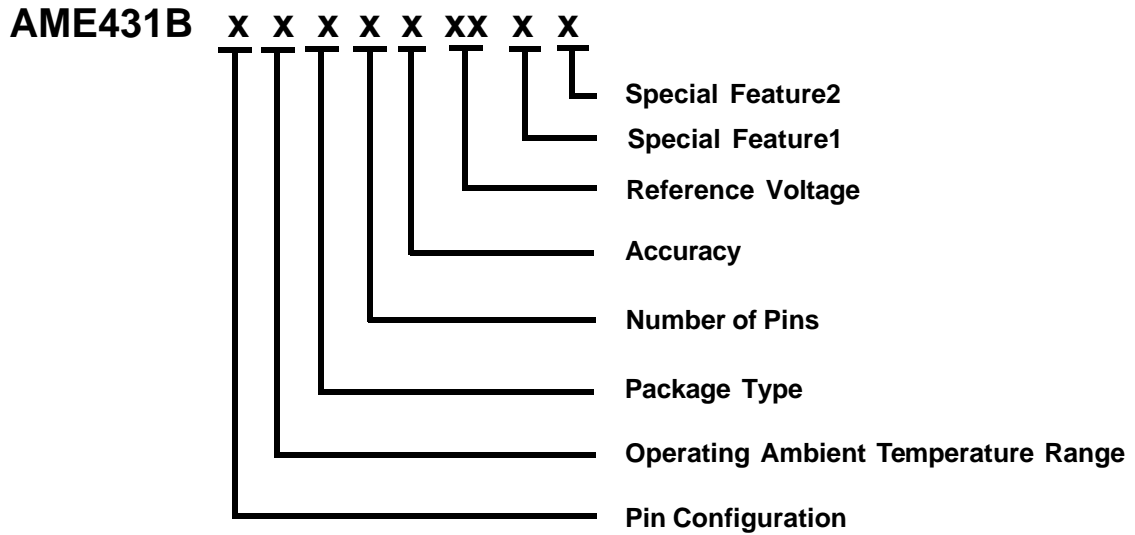
- 1. NC
- 2. NC
- 3. Cathode
- 4. REF
- 5. Anode

* Die Attach:
Non-Conductive Epoxy



AME431B-2.5V

■ Ordering Information



| Pin Configuration | Operating Ambient Temperature Range | Package Type | Number of Pins | Accuracy | Reference Voltage | Special Feature1 | Special Feature2 (For TO-92 Package Only) | | | | | | | | | |
|--|-------------------------------------|--|----------------------|--------------------|-------------------|--|---|--|----------------|-------------------|------|--------|--------|----|------|--------|
| A 1. Cathode <small>(SOT-23)</small> 2. REF <small>(TSOT-23)</small> 3. Anode B 1. REF <small>(SOT-23)</small> 2. Cathode <small>(TSOT-23)</small> 3. Anode A 1. REF <small>(SOT-89)</small> 2. Anode 3. Cathode A 1. REF <small>(TO-92-3)</small> 2. Anode 3. Cathode A 1. Cathode <small>(SOP-8)</small> 2. Anode 3. Anode 4. NC 5. NC 6. Anode 7. Anode 8. REF A 1. NC <small>(SOT-25)</small> 2. NC 3. Cathode 4. REF 5. Anode | J: -40°C to 125°C | A: TO-92 E: SOT-2X F: SOT-89 H: SOP | A: 8 T: 3 V: 5 | A: 0.5% B: 1.0% | 25: 2.5V | Y: Lead free & Low profile Z: Lead free | <table border="0"> <thead> <tr> <th></th> <th><u>Package</u></th> <th><u>Lead Pitch</u></th> </tr> </thead> <tbody> <tr> <td>N/A:</td> <td>Taping</td> <td>5.08mm</td> </tr> <tr> <td>1:</td> <td>Bulk</td> <td>2.54mm</td> </tr> </tbody> </table> | | <u>Package</u> | <u>Lead Pitch</u> | N/A: | Taping | 5.08mm | 1: | Bulk | 2.54mm |
| | <u>Package</u> | <u>Lead Pitch</u> | | | | | | | | | | | | | | |
| N/A: | Taping | 5.08mm | | | | | | | | | | | | | | |
| 1: | Bulk | 2.54mm | | | | | | | | | | | | | | |

AME431B-2.5V
■ Ordering Information

| Part Number | Marking* | Reference Voltage | Accuracy | Package | Operating Ambient Temperature Range |
|-------------------|--------------------------------|-------------------|----------|---------|-------------------------------------|
| AME431BAJETA25Z | BAFww | 2.5V | 0.5% | SOT-23 | - 40°C to 125°C |
| AME431BAJETA25Y | BAFww | 2.5V | 0.5% | TSOT-23 | - 40°C to 125°C |
| AME431BBJETA25Z | BAGww | 2.5V | 0.5% | SOT-23 | - 40°C to 125°C |
| AME431BBJETA25Y | BAGww | 2.5V | 0.5% | TSOT-23 | - 40°C to 125°C |
| AME431BAJETB25Z | AZAww | 2.5V | 1.0% | SOT-23 | - 40°C to 125°C |
| AME431BAJETB25Y | AZAww | 2.5V | 1.0% | TSOT-23 | - 40°C to 125°C |
| AME431BBJETB25Z | AZBww | 2.5V | 1.0% | SOT-23 | - 40°C to 125°C |
| AME431BBJETB25Y | AZBww | 2.5V | 1.0% | TSOT-23 | - 40°C to 125°C |
| AME431BAJFTA25Z | A431B BKXww | 2.5V | 0.5% | SOT-89 | - 40°C to 125°C |
| AME431BAJFTB25Z | A431B BJBww | 2.5V | 1.0% | SOT-89 | - 40°C to 125°C |
| AME431BAJHAB25Z | 431B BJCww | 2.5V | 1.0% | SOP-8 | - 40°C to 125°C |
| AME431BAJATB25Z | AME25 431B AJATB yyww | 2.5V | 1.0% | TO-92-3 | - 40°C to 125°C |
| AME431BAJATB25Z-1 | AME25 431B AJATB yyww | 2.5V | 1.0% | TO-92-3 | - 40°C to 125°C |
| AME431BAJATA25Z | AME25 431B AJATA yyww | 2.5V | 0.5% | TO-92-3 | - 40°C to 125°C |
| AME431BAJATA25Z-1 | AME25 431B AJATA yyww | 2.5V | 0.5% | TO-92-3 | - 40°C to 125°C |

Note: yyww & ww represents the date code and pls refer to Date Code Rule on Package Dimension.

* A line on top of the first letter represents lead free plating such as BAF

Please consult AME sales office or authorized Rep./Distributor for output voltage and package type availability.



AME431B-2.5V

■ Absolute Maximum Ratings

| Parameter | Maximum | Unit |
|-----------------|---------|------|
| Cathode Current | 150 | mA |
| Cathode Voltage | 40 | V |

Caution: Stress above the listed absolute maximum rating may cause permanent damage to the device

■ Recommended Operating Conditions

| Parameter | Rating | | Unit |
|----------------------------|-----------|------------|------|
| Supply Current | 1 to 100 | | mA |
| Operation Voltage Range | 2.5 to 36 | | V |
| Ambient Temperature Range | T_A | -40 to 125 | °C |
| Junction Temperature Range | T_J | -40 to 125 | °C |
| Storage Temperature Range | T_{STG} | -65 to 150 | °C |

AME431B-2.5V
■ Thermal Information

| Parameter | Package | Die Attach | Symbol | Maximum | Unit |
|---|---------------------|-------------------------|---------------|---------|--------|
| Thermal Resistance (Junction to Case) | SOT-23** TSOT-23 | Conductive Epoxy | θ_{JC} | 81 | °C / W |
| | SOT-89* | | | 40 | |
| | TO-92-3** | | | 80 | |
| | SOP-8** | | | 60 | |
| | SOT-25** TSOT-25 | Non-Conductive Epoxy | | 140 | |
| Thermal Resistance (Junction to Ambient) | SOT-23 TSOT-23 | Conductive Epoxy | θ_{JA} | 260 | °C / W |
| | SOT-89 | | | 180 | |
| | TO-92-3 | | | 150 | |
| | SOP-8 | | | 150 | |
| | SOT-25 TSOT-25 | Non-Conductive Epoxy | | 280 | |
| Internal Power Dissipation | SOT-23 TSOT-23 | Conductive Epoxy | P_D | 400 | mW |
| | SOT-89 | | | 550 | |
| | TO-92-3 | | | 625 | |
| | SOP-8 | | | 810 | |
| | SOT-25 TSOT-25 | Non-Conductive Epoxy | | 400 | |
| Solder Iron (10 Sec)*** | | | | 350 | °C |

* Measure θ_{JC} on backside center of tab.

** Measure θ_{JC} on center of molding compound if IC has no tab.

*** MIL-STD-202G 210F

AME431B-2.5V

■ Electrical Specifications (AME431Bxxxxx25)

$T_A = 25^\circ\text{C}$, $I_{REF} = 10\text{mA}$ unless otherwise specified

| Parameter | Test Circuit | Symbol | Test Condition | Min | Typ | Max | Units | |
|---|--------------|--|--|---|------|--------|---------------|------|
| Reference Voltage | 0.5% | 1 | $V_{KA} = V_{REF}$, $I_{KA} = 10\text{mA}$ | 2.4875 | 2.50 | 2.5125 | V | |
| | 1.0% | | | 2.4750 | 2.50 | 2.5250 | | |
| Deviation of Reference Voltage Over Temperature | 1 | ΔV_{REF} | $V_{KA} = V_{REF}$, $I_{KA} = 10\text{mA}$ | 0°C to 70°C | - | 4.5 | 8 | mV |
| | | | -40°C to 125°C | - | 4.5 | 18 | | |
| Ratio of Change in Reference Voltage to the Change in Cathode Voltage | 2 | $\frac{\Delta V_{REF}}{\Delta V_{KA}}$ | $I_{KA} = 10\text{mA}$ | $\Delta V_{KA} = 10\text{V to } V_{REF}$ | - | -1.0 | -2.7 | mV/V |
| | | | | $\Delta V_{KA} = 36\text{V to } 10\text{V}$ | - | -0.5 | -2.0 | |
| Reference Current | 2 | I_{REF} | $I_{KA} = 10\text{mA}$ $R1 = 10\text{K}\Omega$, $R2 = \infty$ | - | 0.7 | 4.0 | μA | |
| Deviation of Reference Current Over Full Temperature Range | 2 | ΔI_{REF} | $R1 = 10\text{K}\Omega$, $R2 = \infty$ $I_{KA} = 10\text{mA}$ $T_A = -40^\circ\text{C to } 125^\circ\text{C}$ | - | 0.4 | 1.2 | μA | |
| Minimum Cathode Current for Regulation | 1 | I_{KA} (MIN) | $V_{KA} = V_{REF}$ | - | 0.4 | 1.0 | mA | |
| Off-State Cathode Current | 3 | I_{KA} (OFF) | $V_{KA} = 36\text{V}$, $V_{REF} = 0\text{V}$ | - | 0.05 | 1.0 | μA | |
| Dynamic Impedance | 1 | Z_{KA} | $V_{KA} = V_{REF}$, $I_{KA} = 1 \text{ to } 100\text{mA}$ $F \leq 1\text{KHz}$ | - | 0.15 | 0.5 | Ω | |

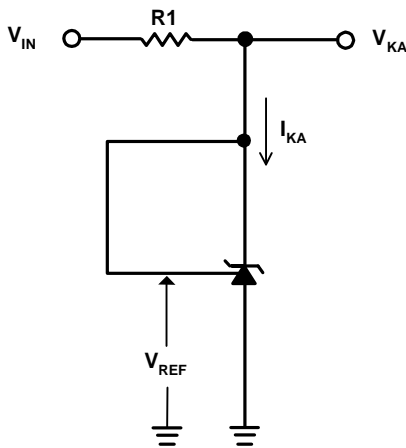


Figure1.
Test Circuit for $V_{KA} = V_{REF}$

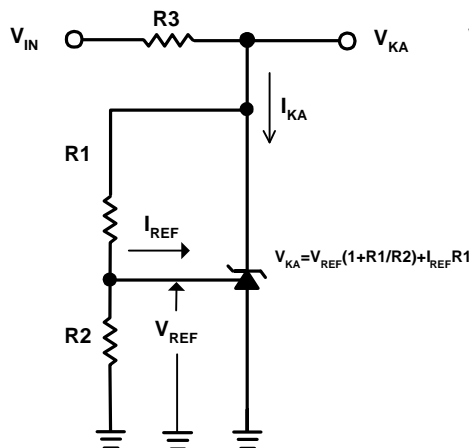


Figure2.
Test Circuit for $V_{KA} > V_{REF}$

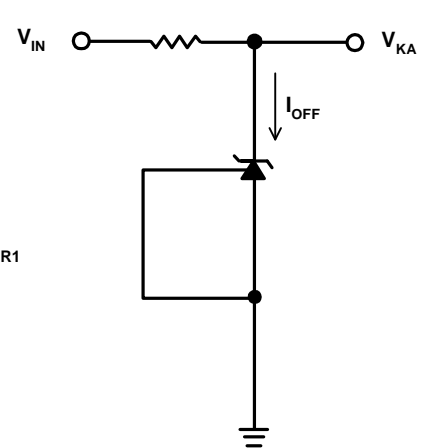
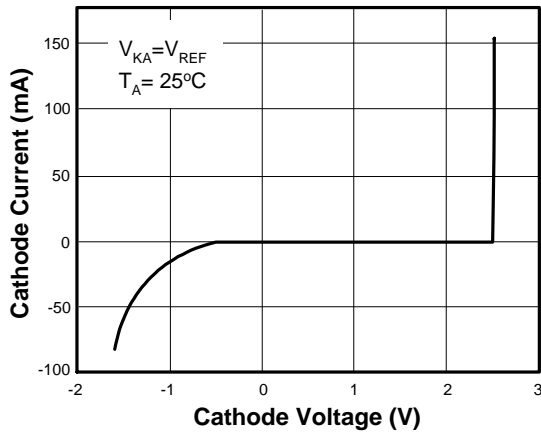
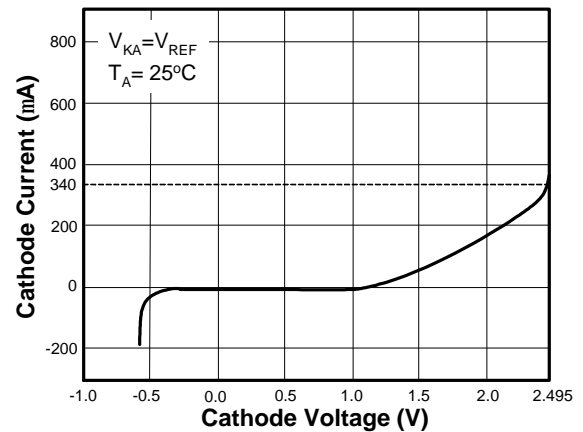
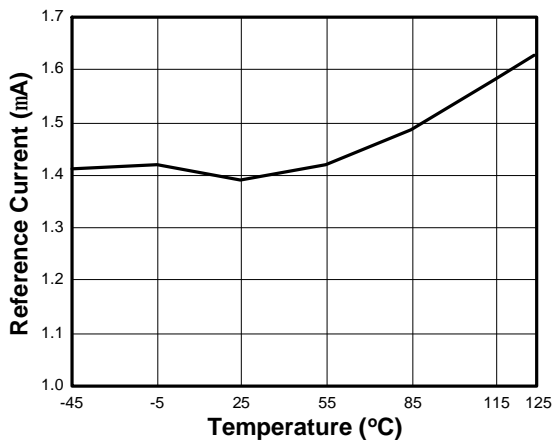
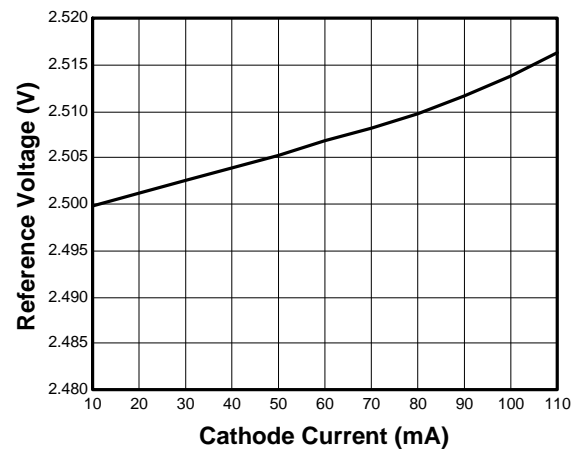
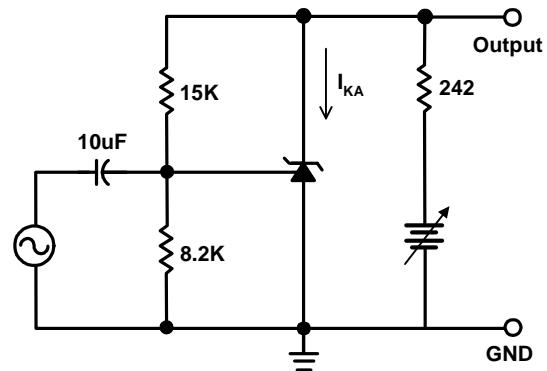
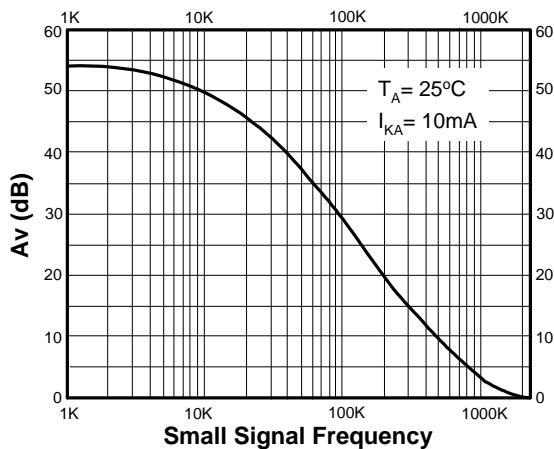


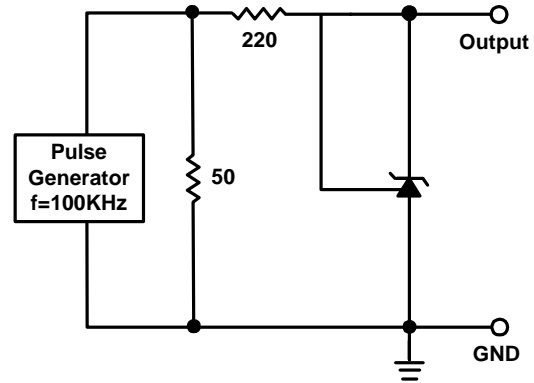
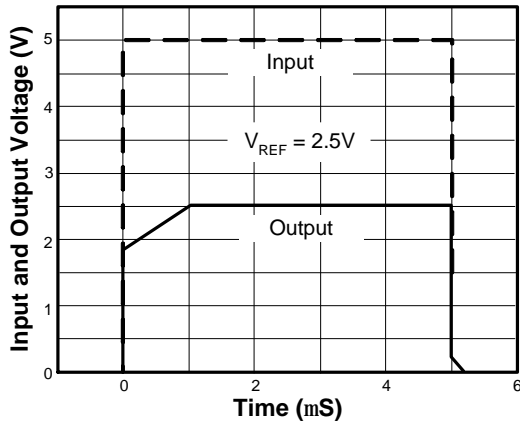
Figure3.
Test Circuit for I_{OFF}

Cathode Current vs. Cathode Voltage

Current vs. Cathode Voltage

Reference Current vs. Temperature

Reference Voltage vs. Cathode Current

Small Signal Voltage Gain vs. Frequency


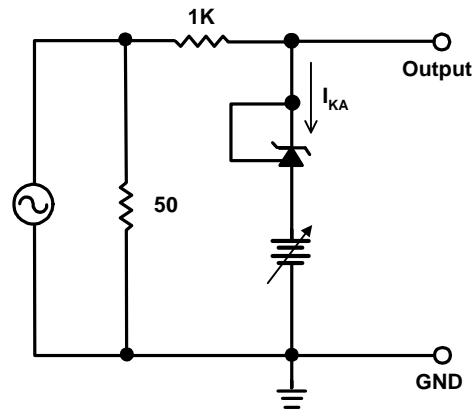
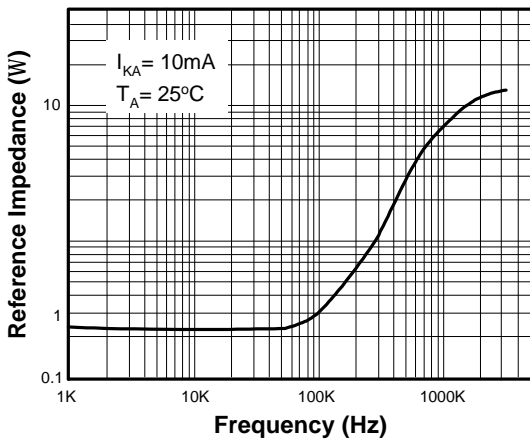


AME431B-2.5V

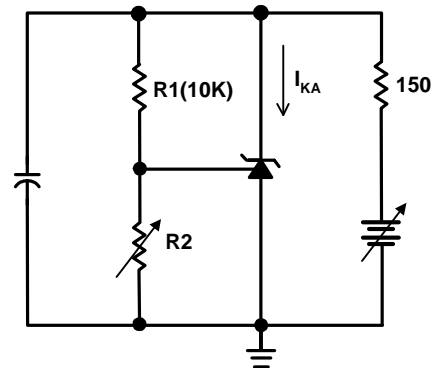
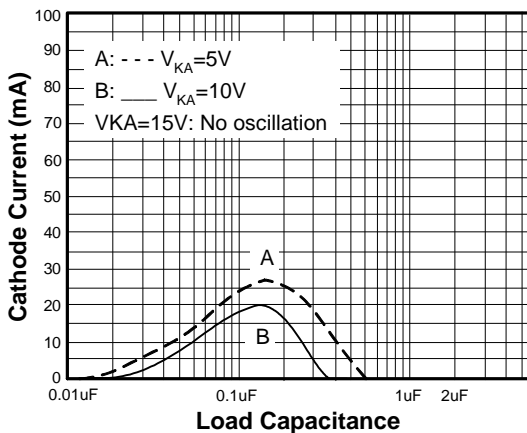
Small Signal Voltage Gain vs. Frequency



Reference Impedance vs. Frequency

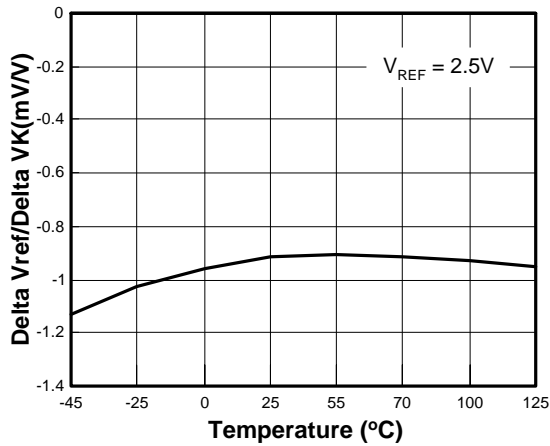


Stability Boundary Conditions vs. Load Capacitance

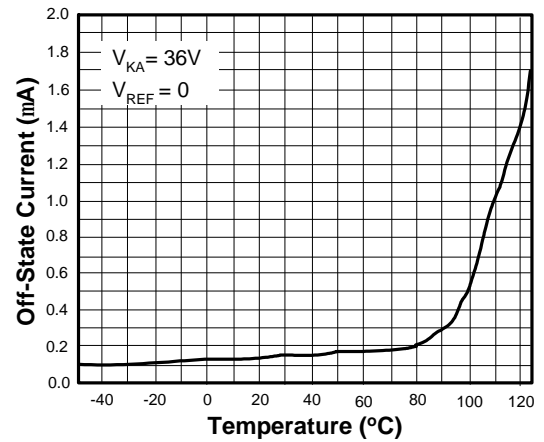


AME431B-2.5V

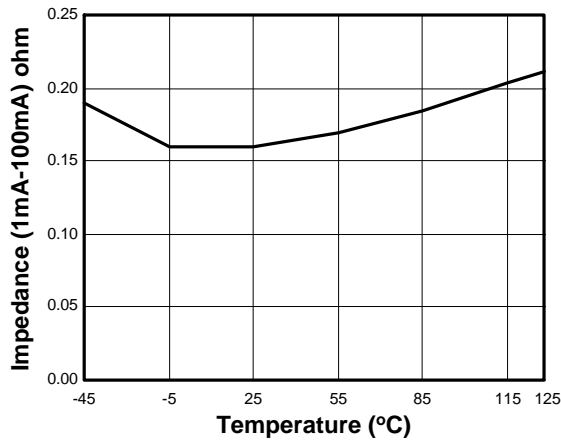
Delta Reference Voltage vs. Temperature



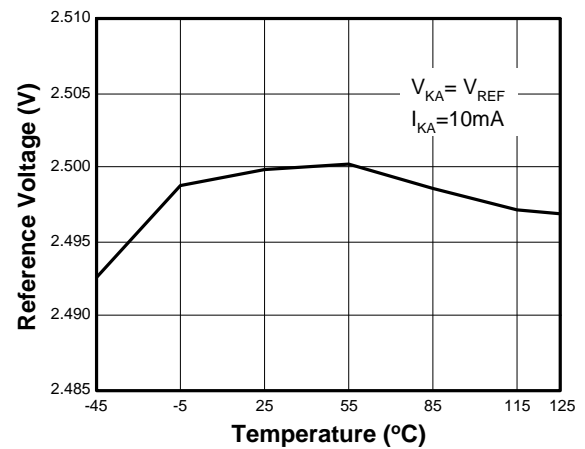
Off-State Current vs. Temperature



Impedance vs. Temperature



Reference Voltage vs. Temperature





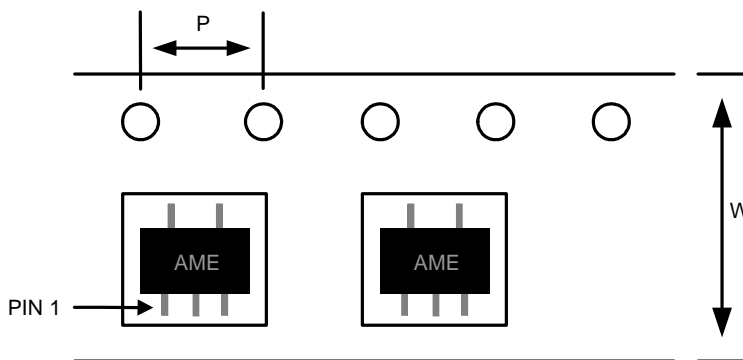
AME431B-2.5V

■ Date Code Rule

| Marking | | | Date Code | | Year |
|---------|----------|----------|-----------|----------|------|
| A | A | A | W | W | xxx0 |
| A | A | A | W | <u>W</u> | xxx1 |
| A | A | A | <u>W</u> | W | xxx2 |
| A | A | A | <u>W</u> | <u>W</u> | xxx3 |
| A | A | <u>A</u> | W | W | xxx4 |
| A | A | <u>A</u> | W | <u>W</u> | xxx5 |
| A | A | <u>A</u> | <u>W</u> | W | xxx6 |
| A | A | <u>A</u> | <u>W</u> | <u>W</u> | xxx7 |
| A | <u>A</u> | A | W | W | xxx8 |
| A | <u>A</u> | A | W | <u>W</u> | xxx9 |

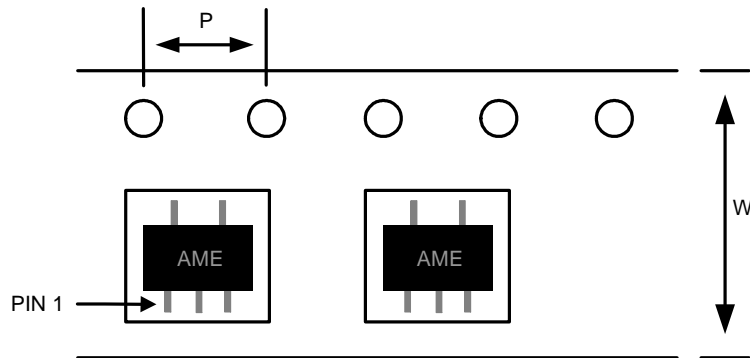
■ Tape and Reel Dimension

SOT-25

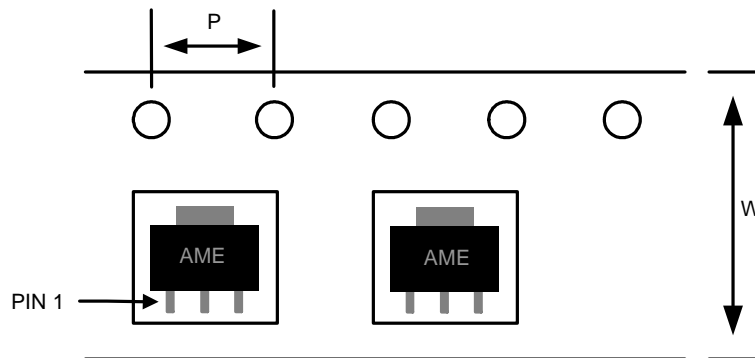


Carrier Tape, Number of Components Per Reel and Reel Size

| Package | Carrier Width (W) | Pitch (P) | Part Per Full Reel | Reel Size |
|---------|-------------------|------------|--------------------|-----------|
| SOT-25 | 8.0±0.1 mm | 4.0±0.1 mm | 3000pcs | 180±1 mm |

AME431B-2.5V
■ Tape and Reel Dimension
TSOT-25

Carrier Tape, Number of Components Per Reel and Reel Size

| Package | Carrier Width (W) | Pitch (P) | Part Per Full Reel | Reel Size |
|---------|-------------------|------------|--------------------|-----------|
| TSOT-25 | 8.0±0.1 mm | 4.0±0.1 mm | 3000pcs | 180±1 mm |

SOT-89

Carrier Tape, Number of Components Per Reel and Reel Size

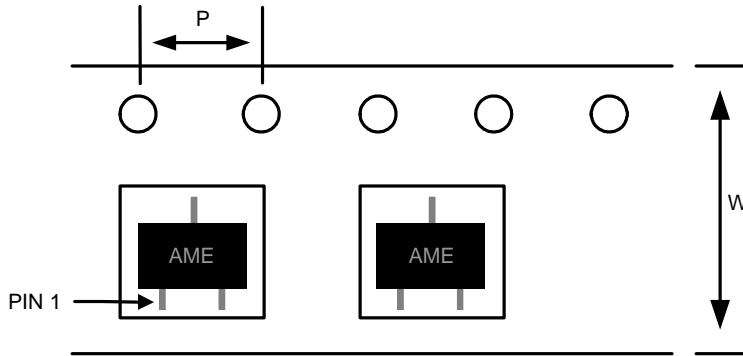
| Package | Carrier Width (W) | Pitch (P) | Part Per Full Reel | Reel Size |
|---------|-------------------|------------|--------------------|-----------|
| SOT-89 | 12.0±0.1 mm | 4.0±0.1 mm | 1000pcs | 180±1 mm |



AME431B-2.5V

■ Tape and Reel Dimension

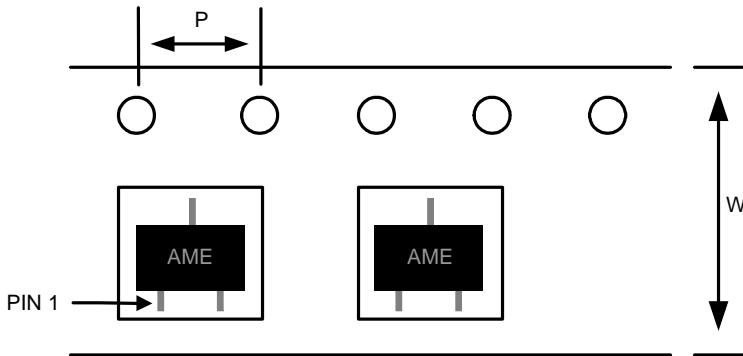
SOT-23



Carrier Tape, Number of Components Per Reel and Reel Size

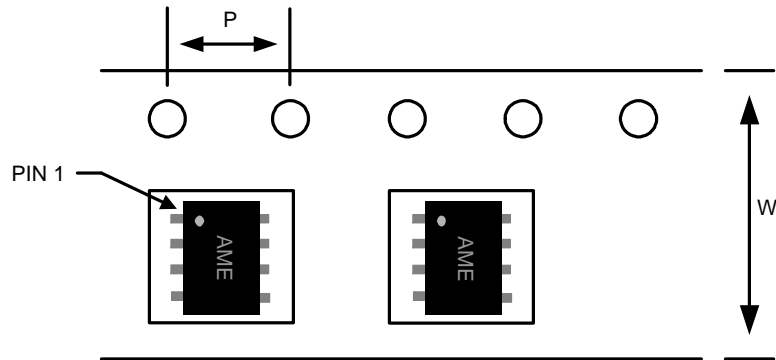
| Package | Carrier Width (W) | Pitch (P) | Part Per Full Reel | Reel Size |
|---------|-------------------|------------|--------------------|-----------|
| SOT-23 | 8.0±0.1 mm | 4.0±0.1 mm | 3000pcs | 180±1 mm |

TSOT-23



Carrier Tape, Number of Components Per Reel and Reel Size

| Package | Carrier Width (W) | Pitch (P) | Part Per Full Reel | Reel Size |
|---------|-------------------|------------|--------------------|-----------|
| TSOT-23 | 8.0±0.1 mm | 4.0±0.1 mm | 3000pcs | 180±1 mm |

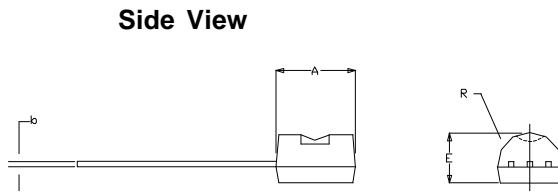
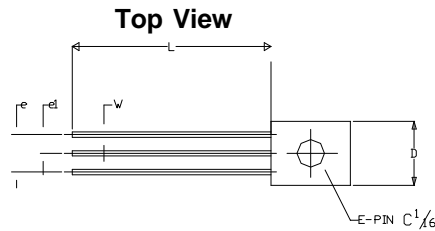
AME431B-2.5V
■ Tape and Reel Dimension
SOP-8

Carrier Tape, Number of Components Per Reel and Reel Size

| Package | Carrier Width (W) | Pitch (P) | Part Per Full Reel | Reel Size |
|---------|-------------------|------------|--------------------|-----------|
| SOP-8 | 12.0±0.1 mm | 4.0±0.1 mm | 2500pcs | 330±1 mm |

AME431B-2.5V

■ Package Dimension

TO-92-3 (bulk pack)

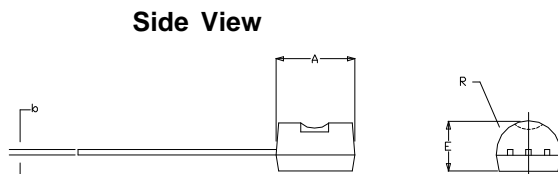
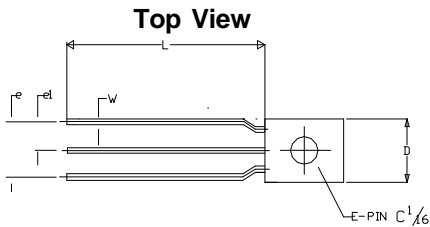


| SYMBOLS | MILLIMETERS | | INCHES | |
|-----------|-------------|-------|--------|--------|
| | MIN | MAX | MIN | MAX |
| A | 4.32 | 4.95 | 0.1701 | 0.1949 |
| b | 0.36 | 0.51 | 0.0142 | 0.0201 |
| E | 3.30 | 3.94 | 0.1299 | 0.1551 |
| e | 2.41 | 2.67 | 0.0949 | 0.1051 |
| e1 | 1.14 | 1.40 | 0.0449 | 0.0551 |
| L | 12.70 | 15.49 | 0.5000 | 0.6098 |
| R | 2.16 | 2.41 | 0.0850 | 0.0949 |
| W | 0.41 | 0.56 | 0.0161 | 0.0220 |
| D | 4.45 | 4.95 | 0.1752 | 0.1949 |

Notes:

1. Package outline exclusive of any mold flashes dimension.
2. Package outline exclusive of burr dimension.
3. Lead pitch=2.54mm is bulk pack.
4. Lead pitch=5.08mm is tape pack.

TO-92-3 (tape pack)



| SYMBOLS | MILLIMETERS | | INCHES | |
|-----------|-------------|-------|--------|--------|
| | MIN | MAX | MIN | MAX |
| A | 4.32 | 4.95 | 0.1701 | 0.1949 |
| b | 0.36 | 0.51 | 0.0142 | 0.0201 |
| E | 3.30 | 3.94 | 0.1299 | 0.1551 |
| e | 4.98 | 5.08 | 0.1961 | 0.2000 |
| e1 | 2.49 | 2.54 | 0.0980 | 0.1000 |
| L | 12.70 | 15.49 | 0.5000 | 0.6098 |
| R | 2.16 | 2.41 | 0.0850 | 0.0949 |
| W | 0.41 | 0.56 | 0.0161 | 0.0220 |
| D | 4.45 | 4.95 | 0.1752 | 0.1949 |

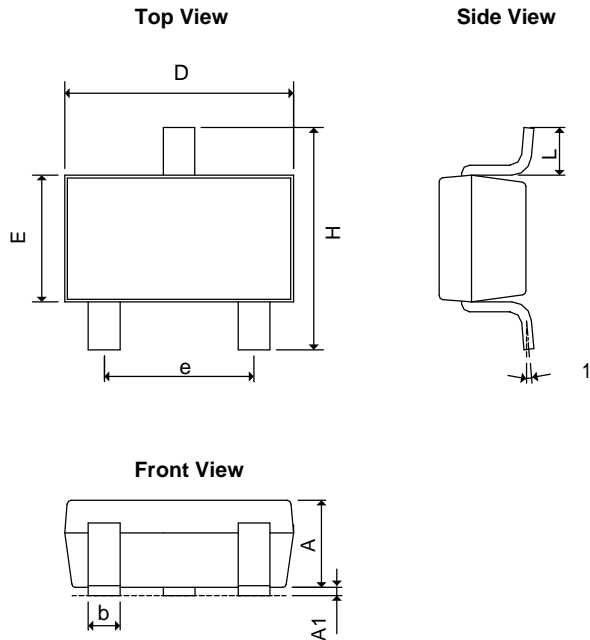
Notes:

1. Package outline exclusive of any mold flashes.
2. Package outline exclusive of burr dimension.
3. Lead pitch=2.54mm is bulk pack.
4. Lead pitch=5.08mm is tape pack.

AME431B-2.5V

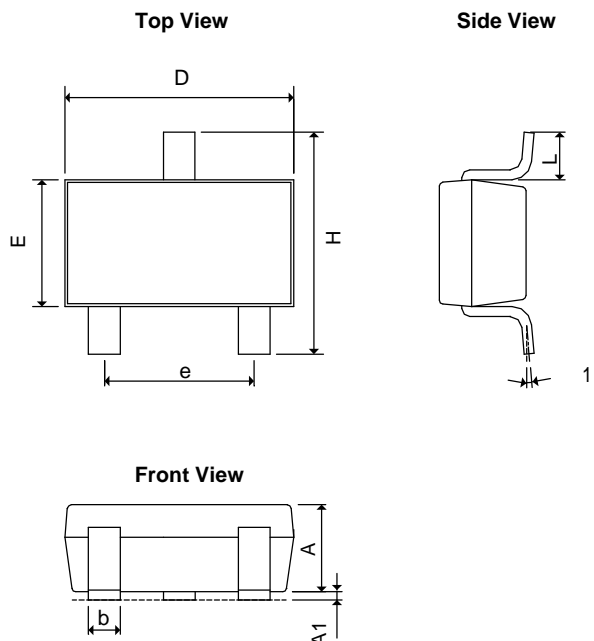
■ Package Dimension

SOT-23



| SYMBOLS | MILLIMETERS | | INCHES | |
|----------------|-------------|------|------------|---------|
| | MIN | MAX | MIN | MAX |
| A | 1.00 | 1.40 | 0.0394 | 0.0551 |
| A ₁ | 0.00 | 0.15 | 0.0000 | 0.0059 |
| b | 0.35 | 0.50 | 0.0138 | 0.0197 |
| D | 2.70 | 3.10 | 0.1063 | 0.1220 |
| E | 1.40 | 1.80 | 0.0551 | 0.0709 |
| e | 1.90 BSC | | 0.0748 BSC | |
| H | 2.40 | 3.00 | 0.09449 | 0.11811 |
| L | 0.35BSC | | 0.0138BSC | |
| q1 | 0° | 10° | 0° | 10° |

TSOT-23

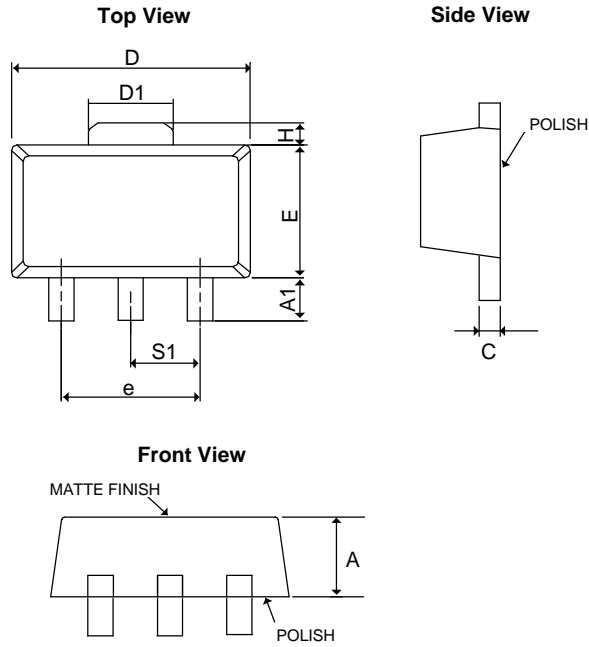


| SYMBOLS | MILLIMETERS | | INCHES | |
|------------------|-------------|------|------------|---------|
| | MIN | MAX | MIN | MAX |
| A+A ₁ | 0.80 | 1.30 | 0.0315 | 0.0512 |
| b | 0.35 | 0.50 | 0.0138 | 0.0197 |
| D | 2.70 | 3.10 | 0.1063 | 0.1220 |
| E | 1.20 | 1.80 | 0.0472 | 0.0709 |
| e | 1.90 BSC | | 0.0748 BSC | |
| H | 2.40 | 3.00 | 0.09449 | 0.11811 |
| L | 0.35BSC | | 0.0138BSC | |
| q1 | 0° | 10° | 0° | 10° |

AME431B-2.5V

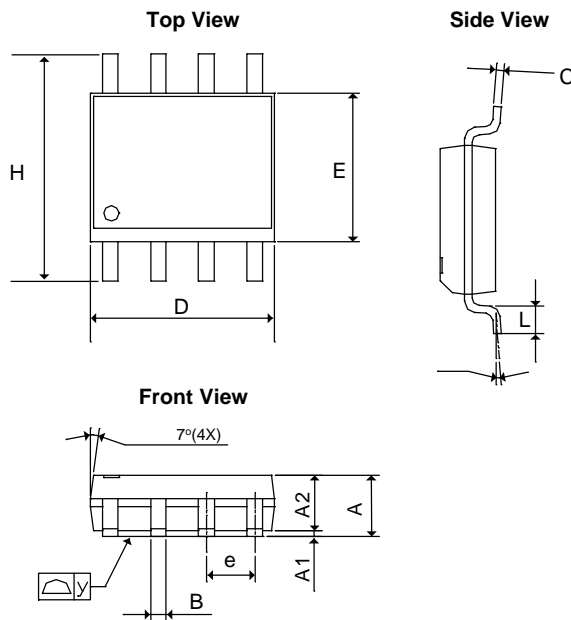
■ Package Dimension

SOT-89



| SYMBOLS | MILLIMETERS | | INCHES | |
|----------------|-------------|------|-----------|---------|
| | MIN | MAX | MIN | MAX |
| A | 1.39 | 1.60 | 0.05472 | 0.06299 |
| A ₁ | 0.8REF | | 0.0315REF | |
| C | 0.35 | 0.44 | 0.01378 | 0.01732 |
| D | 4.39 | 4.60 | 0.17283 | 0.1811 |
| D ₁ | 1.35 | 1.83 | 0.05315 | 0.07205 |
| E | 2.28 | 3.60 | 0.08976 | 0.14173 |
| e | 3.00REF | | 0.1181REF | |
| H | 0.70REF | | 0.0276REF | |
| S1 | 1.50REF | | 0.0590REF | |

SOP-8

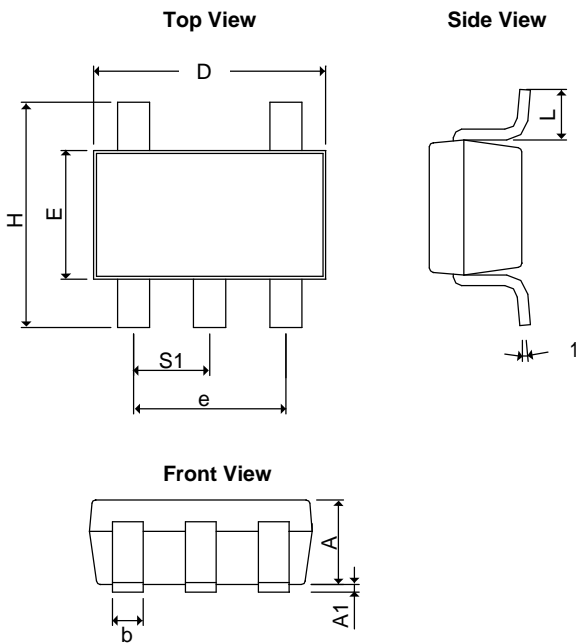


| SYMBOLS | MILLIMETERS | | INCHES | |
|----------------|-------------|------|-------------|---------|
| | MIN | MAX | MIN | MAX |
| A | 1.35 | 1.75 | 0.05315 | 0.0689 |
| A ₁ | 0.10 | 0.30 | 0.00394 | 0.01181 |
| A ₂ | 1.473 REF | | 0.05799 REF | |
| B | 0.33 | 0.51 | 0.01299 | 0.02008 |
| C | 0.19 | 0.25 | 0.00748 | 0.00984 |
| D | 4.80 | 5.33 | 0.18898 | 0.20984 |
| E | 3.80 | 4.00 | 0.14961 | 0.15748 |
| e | 1.27 BSC | | 0.05000 BSC | |
| L | 0.40 | 1.27 | 0.01575 | 0.05000 |
| H | 5.80 | 6.30 | 0.22835 | 0.24803 |
| y | - | 0.10 | - | 0.00394 |
| q | 0° | 8° | 0° | 8° |

AME431B-2.5V

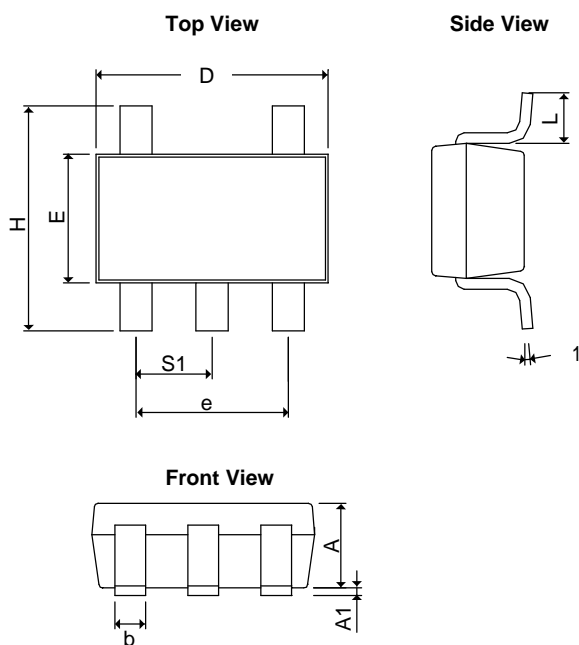
■ Package Dimension

SOT-25



| SYMBOLS | MILLIMETERS | | INCHES | |
|----------------------|-------------|------|-------------|---------|
| | MIN | MAX | MIN | MAX |
| A | 1.20REF | | 0.0472REF | |
| A₁ | 0.00 | 0.15 | 0.0000 | 0.0059 |
| b | 0.30 | 0.55 | 0.0118 | 0.0217 |
| D | 2.70 | 3.10 | 0.1063 | 0.1220 |
| E | 1.40 | 1.80 | 0.0551 | 0.0709 |
| e | 1.90 BSC | | 0.07480 BSC | |
| H | 2.60 | 3.00 | 0.10236 | 0.11811 |
| L | 0.37BSC | | 0.0146BSC | |
| q1 | 0° | 10° | 0° | 10° |
| S₁ | 0.95BSC | | 0.0374BSC | |

TSOT-25



| SYMBOLS | MILLIMETERS | | INCHES | |
|------------------------|-------------|------|-------------|---------|
| | MIN | MAX | MIN | MAX |
| A+A₁ | 0.90 | 1.25 | 0.0354 | 0.0492 |
| b | 0.30 | 0.50 | 0.0118 | 0.0197 |
| D | 2.70 | 3.10 | 0.1063 | 0.1220 |
| E | 1.40 | 1.80 | 0.0551 | 0.0709 |
| e | 1.90 BSC | | 0.07480 BSC | |
| H | 2.40 | 3.00 | 0.09449 | 0.11811 |
| L | 0.35BSC | | 0.0138BSC | |
| q1 | 0° | 10° | 0° | 10° |
| S₁ | 0.95BSC | | 0.0374BSC | |



www.ame.com.tw
E-Mail: sales@ame.com.tw

Life Support Policy:

These products of AME, Inc. are not authorized for use as critical components in life-support devices or systems, without the express written approval of the president of AME, Inc.

AME, Inc. reserves the right to make changes in the circuitry and specifications of its devices and advises its customers to obtain the latest version of relevant information.

© AME, Inc. , september 2007

Document: ORT-DS431B-B.01

Corporate Headquarter
AME, Inc.

2F, 302 Rui-Guang Road, Nei-Hu District
Taipei 114, Taiwan.
Tel: 886 2 2627-8687
Fax: 886 2 2659-2989

U.S.A.(Subsidiary)
Analog Microelectronics, Inc.

3100 De La Cruz Blvd., Suite 201
Santa Clara, CA. 95054-2438
Tel : (408) 988-2388
Fax: (408) 988-2489